



POLLINATION

Honey bees are essential for effective pollination in many crops. By properly managing your hives and field conditions, you can significantly improve pollination efficiency and maximize your yield.

Follow these best practices to optimize honey bee pollination on your farm.

1. Provide Essential Resources for Bees



- **Access to Fresh Water:** Bees need clean water to regulate hive temperature and maintain their health. Provide shallow water sources with floating objects (e.g., corks or sticks) to prevent bees from drowning.

2. Optimal Hive Placement

- **Even Distribution:** Spread hives evenly across your fields. Bees prioritize working on what is closest to them, so proper placement ensures uniform pollination.
- **Elevation:** Place hives on elevated surfaces to protect against flooding during heavy rains. Elevation also prevents grass from obstructing the hive entrance.
- **Flat, Slightly Tilted Surfaces:** Position hives on flat ground with entrances tilted slightly downward. This allows water to drain out during rain.
- **Shade in Hot Climates:** Provide shade to protect hives from extreme heat, reducing the time bees spend cooling the hive and allowing them to focus on pollination.
- **Sunlight in Cold Climates:** In colder regions, maximize hive exposure to sunlight by facing entrances toward the sunrise.
- **Wind Protection:** Avoid placing hives in windy areas, as bees are less active in strong winds. Use natural windbreaks or barriers to shield the hives.

3. Maintain Hive Health and Strength

- **Hive Composition:** Ensure hives contain at least four frames of brood and 5 frames of bees. A strong but not overly heavy hive is ideal for pollination.
- **Avoid Overloaded Hives:** Hives packed with honey and pollen may appear strong but can reduce motivation for bees to forage. Opt for hives with sufficient bees and limited internal resources to encourage active crop pollination.
- **Space in the Super:** Keep the super mostly empty to provide space for bees to collect nectar, preventing overcrowding and absconding.



www.bee-techgroup.com

4. Special considerations for Nets and Tunnels

- **Hive Rotation:** If hives are placed under nets or tunnels, rotate hives every two to three weeks to prevent disorientation and bee loss. Nets can interfere with bee navigation, leading to reduced pollination and hive health.

5. Minimize Chemical Impact

- Apply pesticides only during non-flowering stages or when bees are inactive (early morning or late evening). Always use bee-safe chemicals to protect your pollinators.

6. Monitor and Evaluate Hive Performance

- **Regular Inspections:** Check hive strength, brood development, and bee activity regularly.
- **Track Pollination Success:** Monitor fruit set and seed development to assess pollination effectiveness.
- **Record Keeping:** Maintain detailed records of hive placement, rotations, and performance for future adjustments.

7. Additional Tips for Success

- **Flat Surfaces:** Avoid placing hives on slopes, which can destabilize the structure and hinder bee activity.
- **Entrance Orientation:** Ensure hive entrances face away from prevailing winds and toward areas with maximum sunlight exposure.



MEET DR BEE DISPENSER!

A bio-control dispenser which loads bees with bio control agents and plant simulants to use for pest management during pollination season.

- No Residues
- No Resistance Build-Up
- Sustainable Pest/Disease Management
- Increased Yields
- Cost Effective
- Environmentally Friendly (no non-target effects)
- Targeted disease suppression



CONTACT US

For layout tips, bee attractants, pollination guidance, and beekeeper recommendations, reach out to us today:



21 Dreyer Street, Claremont, Western Cape, Cape Town 7708, South Africa. Office 4043



info@bee-techgroup.com

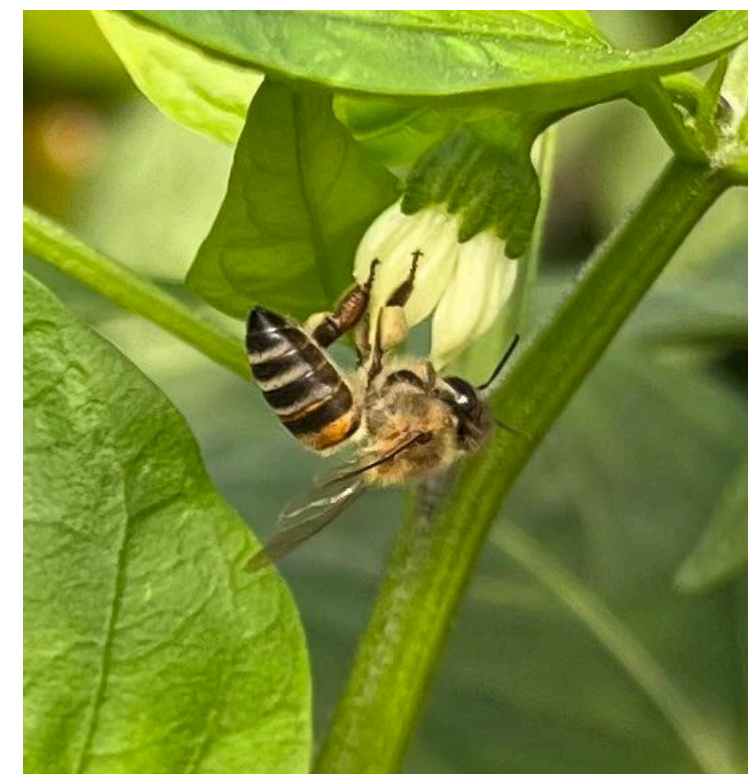


071 404 0101



BEE-TECH GROUP
AGRICULTURAL DEVELOPMENT

POLLINATION BEST PRACTICES



www.bee-techgroup.com